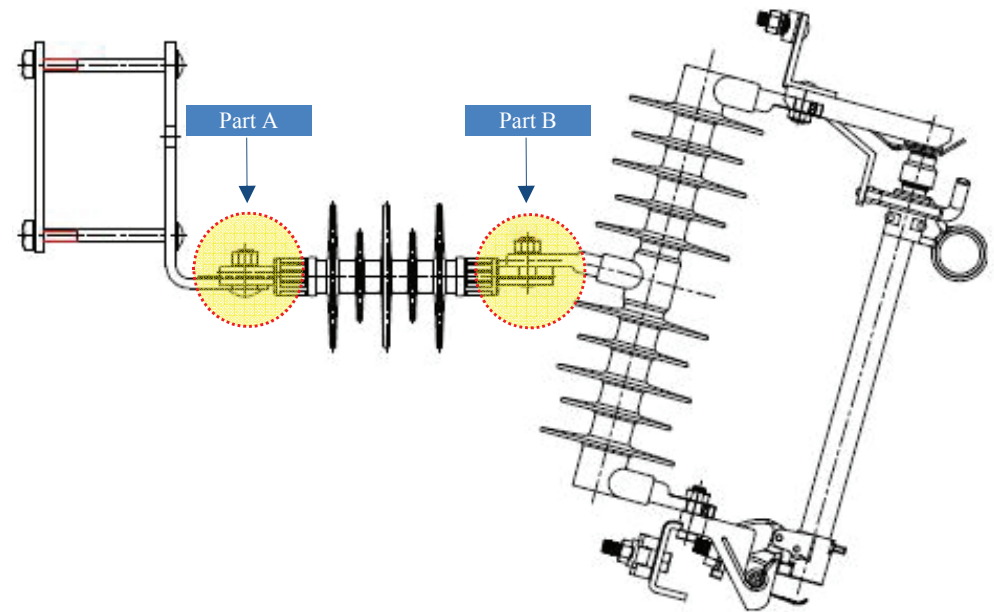


INTRODUCTION and CAUTION

- Thank you for purchasing our Cutout Switch & Coupling Insulator
- Please read and use the Step by Step instructions on the following page to assemble & install the components
- These installation instructions are important to safely and properly install the Cutout Switch & Coupling Insulator to a Nema Type mounting bracket
- If you do not understand any portion of this installation guide and need assistance please contact “ARP” customer service at the address & contact information below.

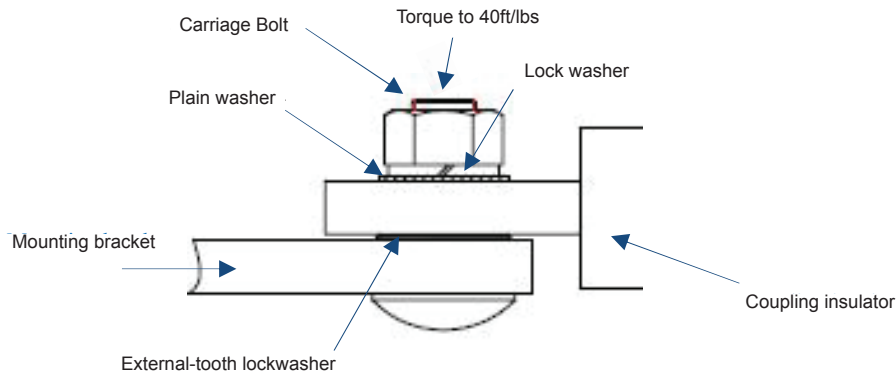
CONFIGURATION



**Assembled Cutout Switch and Coupling Insulator
Installed on Mounting Bracket**

Installation Instructions for Attaching Cutout & Coupling Insulator to Mounting Bracket

Part A: Installing Coupling Insulator to Nema Mounting Bracket



Step 1: Once Mounting Bracket is attached to the Cross Arm the Carriage Bolt is installed from bottom of mounting bracket



Step 2: The external star washer is placed onto the carriage bolt to go between the Mounting Bracket & Coupling Insulator



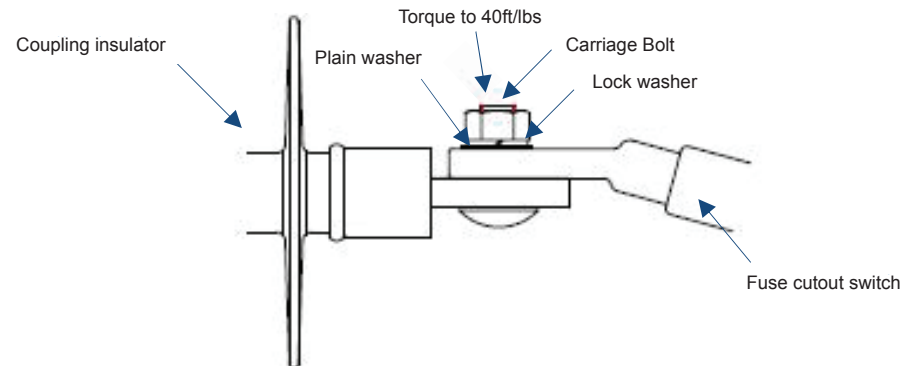
Step 3: Coupling Insulator End Fitting is placed flat surface down above the Star Washer



Step 4: Flat Washer, Lock Washer & Nut are threaded onto Carriage Bolt and Torqued to 40ft/lbs.



Part B: Installing Coupling Insulator to Cutout Switch



Step 1: Carriage Bolt is installed with head of bolt thru flat side of Coupling Insulator



Step 2: Cutout Switch is placed over the Carriage bolt and registered by the recessed area of the Coupling Switch



Step 3: Flat Washer, Lock Washer & Nut are threaded onto Carriage Bolt and Torqued to 40ft/lbs.



Step 4: Verify all Bolts are tight and Cutout is ready for Connection of all Cables



Camden Printing Form 25169 - Rev. 5-16 (27203)