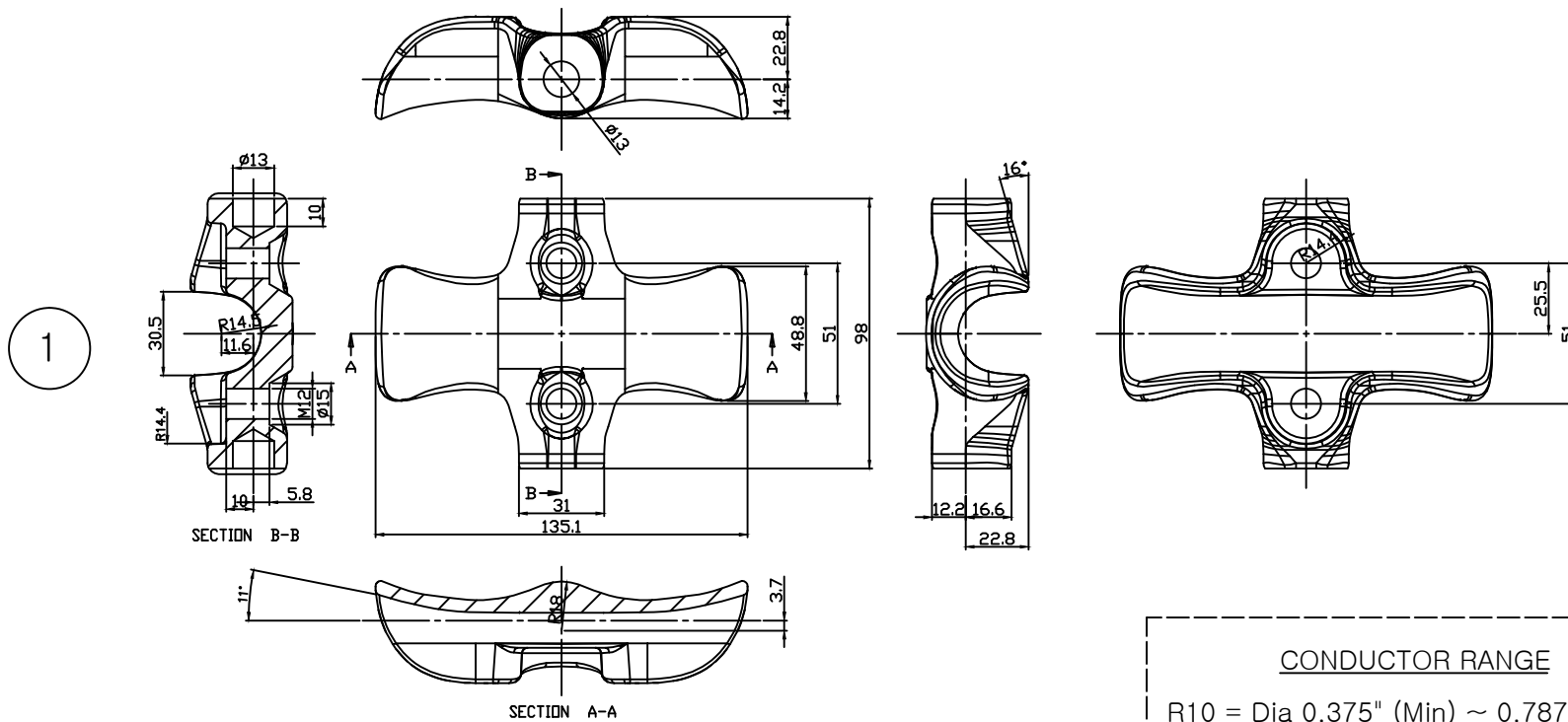


# CATALOG No. ARP-ATC 150

REV	REVISION NOTE	DATE	BY
1	INITIAL RELEASE	01/19/2010	C.H.PARK
2	"ANODIZING" coating	07/12/2012	C.H.PARK
3	ADD TO CONDUCTOR RANGE	02/13/2015	J.H.PARK

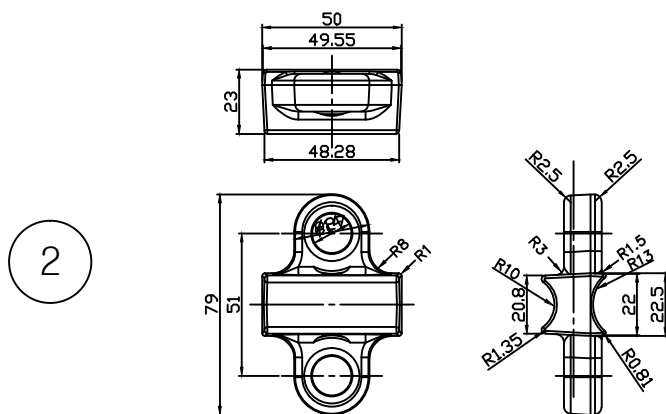
CONDUCTOR RANGE

R10 = Dia 0.375" (Min) ~ 0.787" (Max)

R13 = Dia 0.630" (Min) ~ 1.020" (Max)

NOTE:

1. ALL CLAMP ARE MADE FROM AL ALLOY.
2. SURFACE IS COATED "ANODIZING"
3. THE TOLERANCE ON ALL DIMENSIONS IS NOT EXCEED 1 mm.



2	Upper Clamp	AC4C-T6	1					
1	Down Clamp	AC4C-T6	1					
No.	Part Name	Material	Q'y	Std.	Note			
<div>THESE DRAWINGS AND SPECIFICATIONS, AND THE DATA CONTAINED THEREIN, ARE THE EXCLUSIVE PROPERTY OF <b>TWP TECHNOLOGIES INC.</b> THESE DRAWINGS ARE ISSUED IN STRICT CONFIDENCE AND SHALL NOT, WITHOUT THE PRIOR WRITTEN PERMISSION OF <b>TWP TECHNOLOGIES INC.</b>, BE REPRODUCED, COPIED, OR USED FOR ANY PURPOSE WHATSOEVER, EXCEPT THE MANUFACTURE OF ARTICLES FOR <b>TWP TECHNOLOGIES INC.</b></div>		DIMENSIONAL TOLERANCES UNLESS OTHERWISE NOTED		Designed by C.H.PARK		Date 01/18/13	Part Number ARP-GBH	Scale N/A
		<div><div>X±0.1</div><div>XX±0.02</div><div>XXX±0.010</div><div>ANGLES±1°</div></div>		<div><div>ARP™</div><div>ADVANCED RUBBER PRODUCTS</div><div>DIV. OF TWP TECHNOLOGIES INC</div></div>	WIRE CLAMP FOR POLYMER LINE POST			
					Filepath			
					Units INCHES			